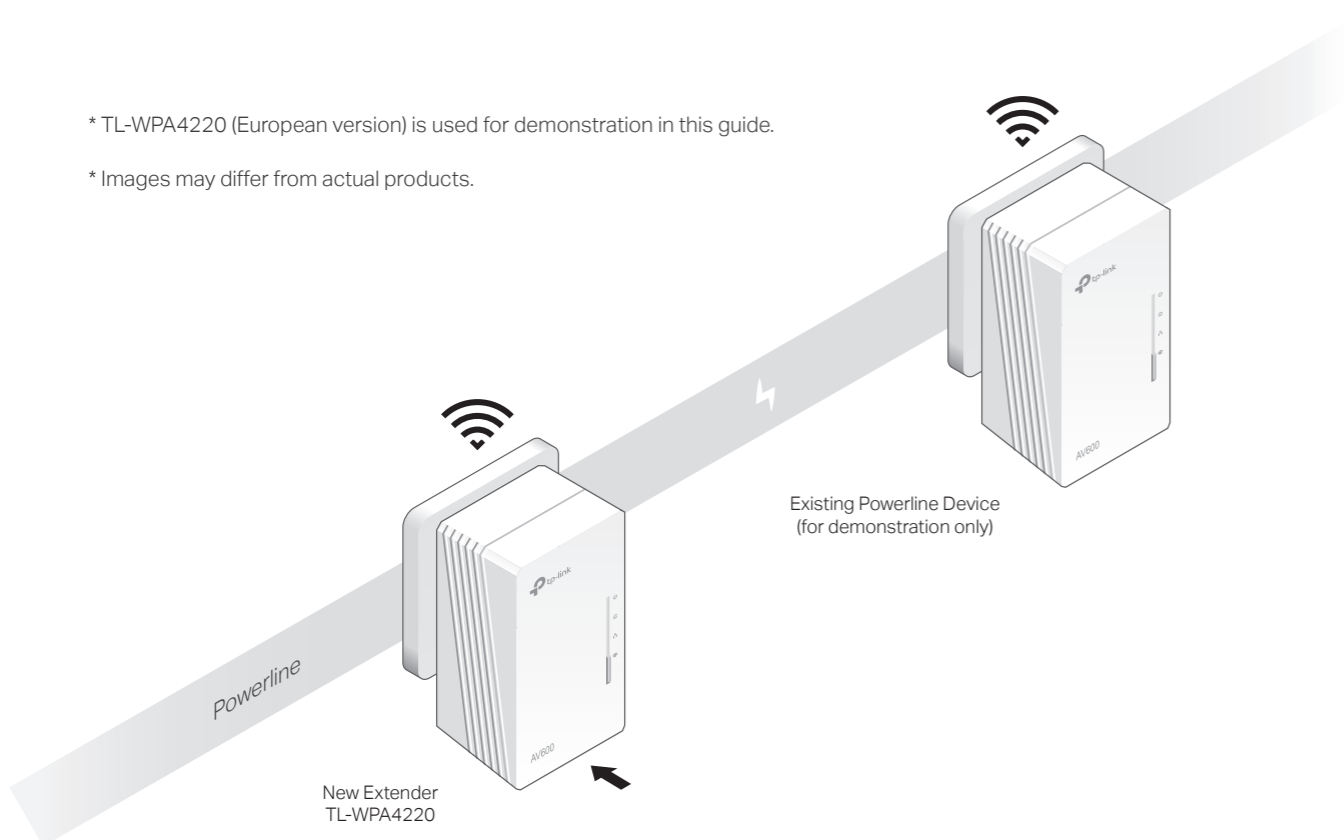


Quick Installation Guide

* TL-WPA4220 (European version) is used for demonstration in this guide.

* Images may differ from actual products.



1 Plug in the new extender **near** one of your existing powerline devices.

2 Check the new extender's Powerline LED . Is it on?

Yes > Step 4

No > Step 3

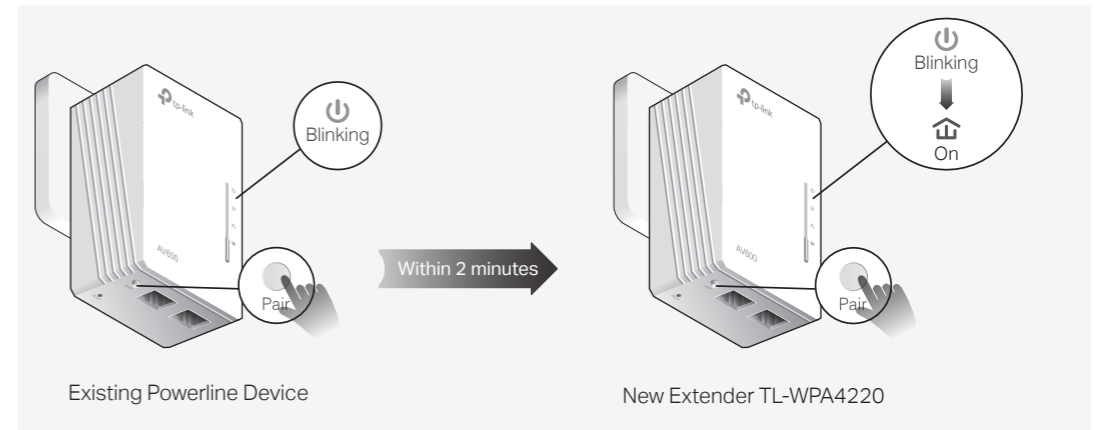
3 Pair the powerline devices.

A Press the Pair button on the existing powerline device for 1 second. The Power LED starts blinking.

Note: If the Power LED does not blink, press the Pair button again.

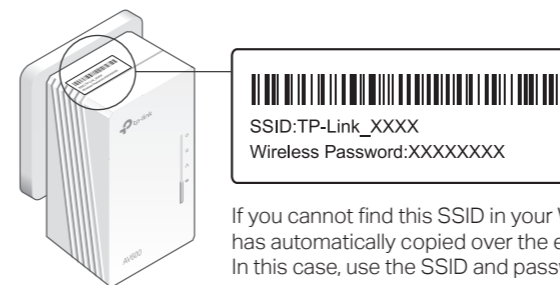
B Within 2 minutes, press the Pair button on the new extender for 1 second. The Power LED starts blinking.

When the Powerline LED on the new extender turns on, the pairing process is complete.



4 Enjoy!

Relocate the extender to the Wi-Fi "dead" zone on the same electrical circuit. Connect your devices to the internet using the default SSID (network name) and password on the label at the top of the extender.



If you cannot find this SSID in your Wi-Fi network list, this may mean the Wi-Fi Move feature has automatically copied over the existing wireless settings (see back for more information). In this case, use the SSID and password of your existing powerline network to connect.

Attention

Plug powerline devices into wall outlets instead of power strips.

Wall Outlet



Power Strip




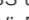
Unify Wi-Fi Networks via Wi-Fi Auto-Sync

Wi-Fi Auto-Sync enables you to easily create one unified Wi-Fi network throughout your home.

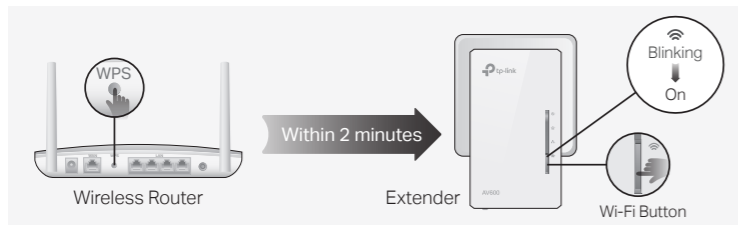
Copy SSID and Password from Your Router via WPS

Note: If your router doesn't have a WPS button, manually change the extender's Wi-Fi settings via the tpPLC app, tpPLC Utility, or web interface.

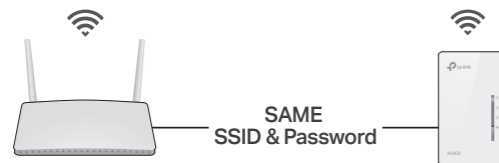
1. Plug in the extender in the same room as your router. Wait until the extender's Wi-Fi LED  turns on.

2. Press your router's WPS button. Within 2 minutes, press the extender's Wi-Fi button for 1 second. The extender's Wi-Fi LED  starts blinking. When it stays on, Wi-Fi settings are copied.

Note: If Wi-Fi settings are not copied within 2 minutes, manually change the extender's Wi-Fi settings.



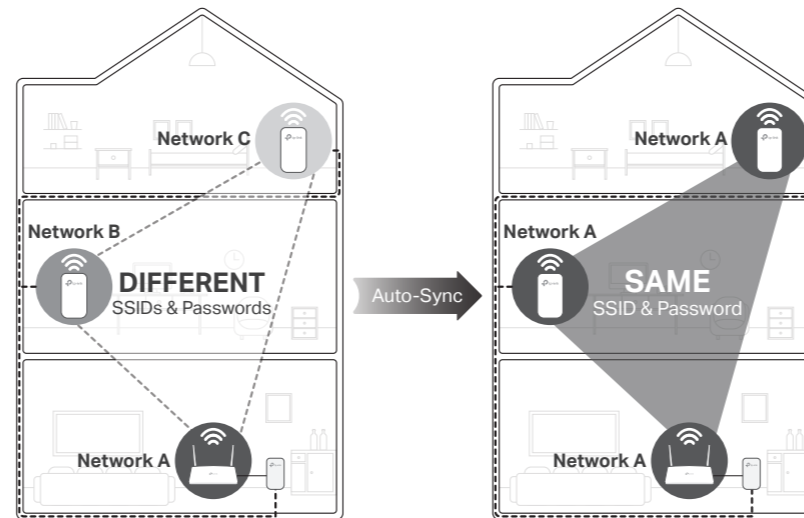
3. Relocate the extender and enjoy the internet using your router's SSID and password.



Auto-Sync Settings to More Extenders via Wi-Fi Move

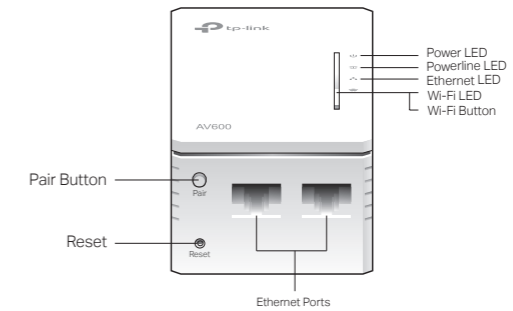
If you have paired your powerline devices, the Wi-Fi settings will automatically sync from the existing extender to the new one.

Note: For more extender models that support Wi-Fi Auto-Sync, visit <http://www.tp-link.com>.



If you personalize any extender with LED schedules or other Wi-Fi settings (such as Wi-Fi schedules and guest network), the settings will also automatically sync to other extenders in the secured powerline network.

Physical Appearance



LED	STATUS	DESCRIPTION
Power	On	The powerline extender is on.
	Blinking	Pairing is in process.
	Off	The powerline extender is off.
Powerline	On	The powerline extender is connected to a powerline network.
	Off	The powerline extender is not connected to any powerline network.
Ethernet	On/Off	The Ethernet port is connected or not connected.
	On	The wireless function is enabled.
Wi-Fi	Blinking	Slowly: The powerline extender is cloning 2.4GHz wireless network settings from the main router. Quickly: The powerline extender is syncing 2.4GHz wireless network settings.
	Off	The wireless function is disabled.

ITEM	DESCRIPTION
Pair Button	Press and hold for 1 second to set up or join a secure powerline network.
Wi-Fi Button	Press for 1 second to start copying Wi-Fi settings from the router. Press and hold for about 5 seconds to turn Wi-Fi on or off.
Reset Button	Press and hold the Pair button for at least 2 seconds, then release the button to reset the extender to default settings.

Personalize Your Network

tpPLC App

For easy management via your smartphone or tablet, download the app from the App Store or Google Play, or simply scan the QR code.



Scan to download



tpPLC App

tpPLC Utility

For easy management via your computer, download the utility on the product's Support page at <https://www.tp-link.com/support/download/>

Note: For detailed instructions, refer to the utility manual on the product's Support page.

Web Interface

To access all settings, connect to an extender wirelessly and visit <http://tplinkplc.net>.

Note: For detailed instructions, refer to the product manual on the product's Support page.

Frequently Asked Questions

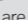
Q1. How do I reset my extender to factory default settings?

A. With the extender plugged into an electrical outlet, press and hold the Reset button for at least 2 seconds. Release the button and all LEDs turn off. When the LEDs turn back on, the reset process is complete.

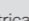
Q2. What should I do if the Powerline LED is off?

A1. Try another wall socket and make sure all powerline devices are on the same electrical circuit.
A2. Try to set up a powerline network by pairing. Refer to the section above for instructions.
A3. If the problem persists, contact our Technical Support.

Q3. What should I do if there is no internet connection in my powerline network?

A1. Make sure all powerline adapters and extenders are on the same electrical circuit.
A2. Make sure the Powerline LEDs  are lit on all of your powerline devices. If they are not, pair all devices again.
A3. Make sure all devices are correctly and securely connected.
A4. Check if you have an internet connection by connecting the computer directly to the modem or router.

Q4. What should I do if a successfully-paired extender does not reconnect after it is relocated?

A1. Make sure all powerline adapters and extenders are on the same electrical circuit.
A2. Try to pair the extender again, and make sure the Powerline LED  is on.
A3. Check for possible interference due to a washing machine, air conditioner or other household appliances that may be too close to one of the powerline devices. Plug the appliance into the integrated electrical socket to remove the electrical noise if your powerline device has an integrated electrical socket.

For technical support, replacement services, user guides, and other information, please visit <https://www.tp-link.com/support>, or simply scan the QR code.

To communicate with TP-Link users or engineers, please join the TP-Link Community at <https://community.tp-link.com>.

If you have any suggestions or needs for our product guides, you are welcome to email techwriter@tp-link.com.cn.



TP-Link hereby declares that the device is in compliance with the essential requirements and other relevant provisions of directives 2014/53/EU, 2009/125/EC, 2011/65/EU and (EU)2015/863. The original EU Declaration of Conformity may be found at <https://www.tp-link.com/en/support/ce/>.
TP-Link hereby declares that the device is in compliance with the essential requirements and other relevant provisions of the Radio Equipment Regulations 2017. The original UK Declaration of Conformity may be found at <https://www.tp-link.com/support/ukca/>.

Safety Information

- Keep the device away from water, fire, humidity or hot environments.
 - Do not attempt to disassemble, repair, or modify the device. If you need service, please contact us.
 - Do not use the device where wireless devices are not allowed.
 - The socket-outlet shall be installed near the equipment and shall be easily accessible.
 - Plug the powerline devices directly into the wall outlets but not the power strips.
- Please read and follow the above safety information when operating the device. We cannot guarantee that no accidents or damage will occur due to improper use of the device. Please use this product with care and operate at your own risk.